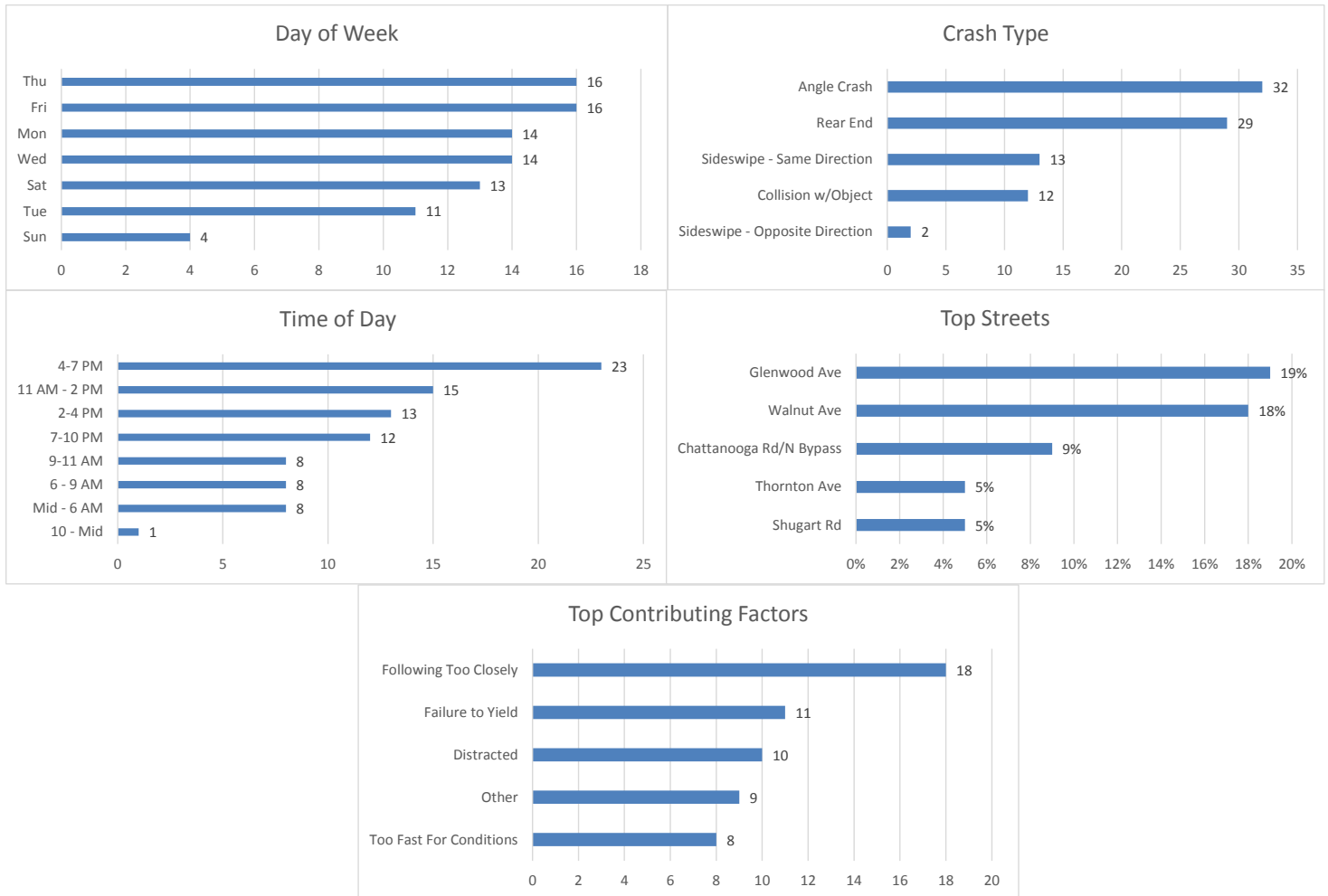


September 2020 Crash Statistics

In September 2020 there were 88 non-private property crashes reported. Injury crashes and total injuries increased from August 2020. Rear end and angle crashes were the most prevalent during September 2020. Disregard stop sign/signal was the leading contributing factor in injury crashes. Following too closely was the leading contributing factor in non-injury crashes. Walnut Ave and Glenwood Ave had the highest number of crashes in September 2020. Glenwood Ave had the highest number of injuries during September 2020.



88 Crashes Reported in September 2020

- There were 7 less crashes in September 2020 than in August 2020.
 - 24 crashes reported in which injuries occurred.
 - That is one injury crash for every 3.7 crashes reported.
 - Multiple injuries were reported in 5 crashes.
- Total Injuries Reported
 - 31 injuries were reported.
 - 0 serious injuries were reported.

Top 5 Streets

- Glenwood Ave
 - 17 Total Crashes
 - 19.3 % of Total Crashes
 - 25.8 % of Injuries Reported (8 Injuries Reported on the Roadway)

- Walnut Ave
 - 16 Total Crashes
 - 18.2 % of Total Crashes
 - 22.6 % of Injuries Reported (7 Injuries Reported on this Roadway)

- Chattanooga Rd/N Bypass
 - 8 Total Crashes
 - 9.1 % of Total Crashes
 - 12.9 % of Injuries Reported (4 Injuries Reported on this Roadway)

- Thornton Ave
 - 4 Total Crashes
 - 4.5 % of Total Crashes
 - 6.5 % of Injuries Reported (2 Injuries Reported on the Roadway)

- Shugart Rd
 - 4 Total Crashes
 - 4.5 % of Total Crashes
 - 0 % of Injuries Reported (0 Injuries Reported on the Roadway)

Crashes Involving DUI

- 5 Reported Crashes involving DUI

Crashes Involving Speed

- 7 Reported Crashes involving Speed (Includes Too Fast for Conditions)

Crashes Involving Distracted or Inattentive Driver

- 10 Crashes Reported with Distracted or Inattentive Driver

Crashes Involving Drivers Following One Another Too Closely

- 18 Crashes Reported involving Following Too Closely

Crashes by Type

- Angle Crash 32 / 36.36%
- Rear End 29 / 32.95%
- Sideswipe – Same Direction 13 / 14.77%
- Collision with an Object 12 / 13.64%
- Sideswipe – Opposite Direction 2 / 2.27%

Days of the Week

- 14 crashes occurred on Mondays
- 11 crashes occurred on Tuesdays
- 14 crashes occurred on Wednesdays
- 16 crashes occurred on Thursdays
- 16 crashes occurred on Fridays
- 13 crashes occurred on Saturdays
- 4 crashes occurred on Sundays

Time of Day

- 0000- 0559-8
- 0600-0859-8
- 0900-1059-8
- 1100-1359-15
- 1400-1559-13
- 1600-1859-23
- 1900-2159-12
- 2200-2359-1

Top Contributing Factors

- Following Too Closely: 18 (20.45 % of all crashes)
- Failure to Yield: 11 (12.50 % of all crashes)
- Distracted: 10 (11.36 % of all crashes)
- Other: 9 (10.23 % of all crashes)
- Too Fast for Conditions: 8 (9.09 % of all crashes)

Based on the crash data from August 2020, Selective Enforcement Details were conducted in the following areas in September 2020:

- **Walnut Ave**
- **Chattanooga Rd**
- **Glenwood Ave**

There were 33 total Enforcement Details conducted in September 2020, resulting in 307 total violations being identified.

Comparing the crash data compiled and the enforcement activities conducted for the month of September 2020, details will be conducted in October 2020 in the following areas:

- **Walnut Ave**
- **Chattanooga Rd**
- **Glenwood Ave**