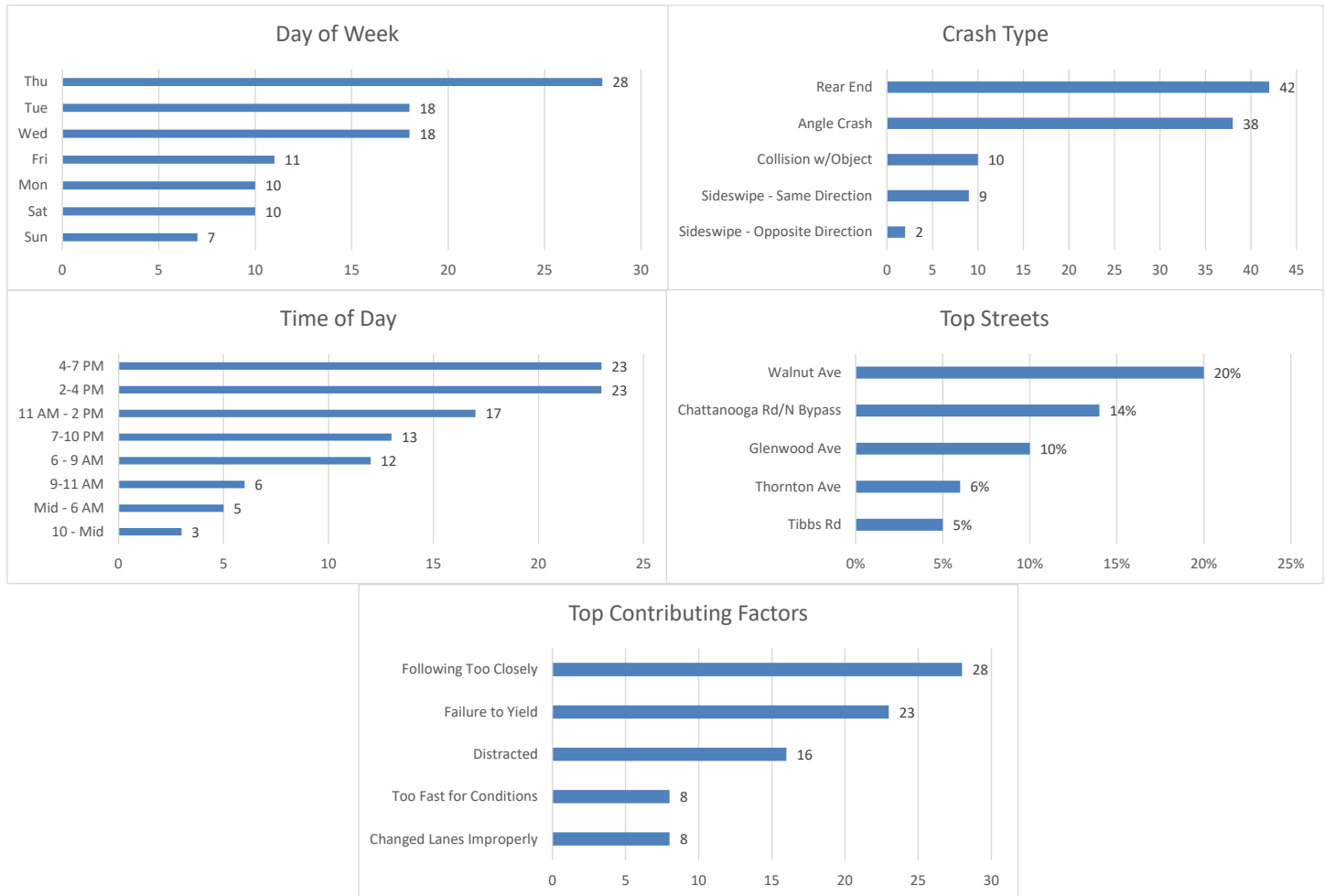


December 2020 Crash Statistics

In December 2020 there were 102 non-private property crashes reported. Injury crashes stayed the same and total injuries decreased when compared to November 2020. Rear end and angle crashes were the most prevalent during December 2020. Failure to yield was the leading contributing factor in injury and non-injury crashes. Walnut Ave had the highest number of crashes and injuries in December 2020.



102 Crashes Reported in December 2020

- There were 3 more crashes in December 2020 than in November 2020.
 - 18 crashes reported in which injuries occurred.
 - That is one injury crash for every 5.7 crashes reported.
 - Multiple injuries were reported in 4 crashes.

- Total Injuries Reported
 - 22 injuries were reported.
 - 1 serious injury was reported.
 - 0 fatalities were reported.

Top 5 Streets

- Walnut Ave
 - 20 Total Crashes
 - 19.6 % of Total Crashes
 - 22.7 % of Injuries Reported (5 Injuries Reported on the Roadway)

- Chattanooga Rd/N Bypass
 - 14 Total Crashes
 - 13.7 % of Total Crashes
 - 13.6 % of Injuries Reported (3 Injuries Reported on this Roadway)

- Glenwood Ave
 - 10 Total Crashes
 - 9.8 % of Total Crashes
 - 4.6 % of Injuries Reported (1 Injury Reported on this Roadway)

- Thornton Ave
 - 6 Total Crashes
 - 5.9 % of Total Crashes
 - 18.2 % of Injuries Reported (4 Injuries Reported on the Roadway)

- Tibbs Rd
 - 5 Total Crashes
 - 4.9 % of Total Crashes
 - 0 % of Injuries Reported (0 Injuries Reported on the Roadway)

Crashes Involving DUI

- 2 Reported Crashes involving DUI

Crashes Involving Speed

- 6 Reported Crashes involving Speed (Includes Too Fast for Conditions)

Crashes Involving Distracted or Inattentive Driver

- 16 Crashes Reported with Distracted or Inattentive Driver

Crashes Involving Drivers Following One Another Too Closely

- 28 Crashes Reported involving Following Too Closely

Crashes by Type

- Rear End 42 / 41.18%
- Angle 38 / 37.25%
- Collision with an Object 10 / 9.80%
- Sideswipe – Same Direction 9 / 8.82%
- Sideswipe – Opposite Direction 2 / 1.96%

Days of the Week

- 10 crashes occurred on Mondays
- 18 crashes occurred on Tuesdays
- 18 crashes occurred on Wednesdays
- 28 crashes occurred on Thursdays
- 11 crashes occurred on Fridays
- 10 crashes occurred on Saturdays
- 7 crashes occurred on Sundays

Time of Day

- 0000-0559 - 5
- 0600-0859 - 12
- 0900-1059 - 6
- 1100-1359 - 17
- 1400-1559 - 23
- 1600-1859 - 23
- 1900-2159 - 13
- 2200-2359 - 3

Top Contributing Factors

- Following Too Closely: 28 (27.45 % of all crashes)
- Failure to Yield: 23 (22.55 % of all crashes)
- Distracted: 16 (15.69 % of all crashes)
- Too Fast for Conditions: 8 (7.84 % of all crashes)
- Changed Lanes Improperly: 8 (7.84 % of all crashes)

Based on the crash data from November 2020, Selective Enforcement Details were conducted in the following areas in December 2020:

- **Walnut Ave**
- **Abutment Rd**

There were 3 total Enforcement Details conducted in December 2020, resulting in 24 total violations being identified.

Comparing the crash data compiled and the enforcement activities conducted for the month of December 2020, details will be conducted in January 2021 in the following areas:

- **Walnut Ave**
- **Chattanooga Rd**
- **Glenwood Ave**