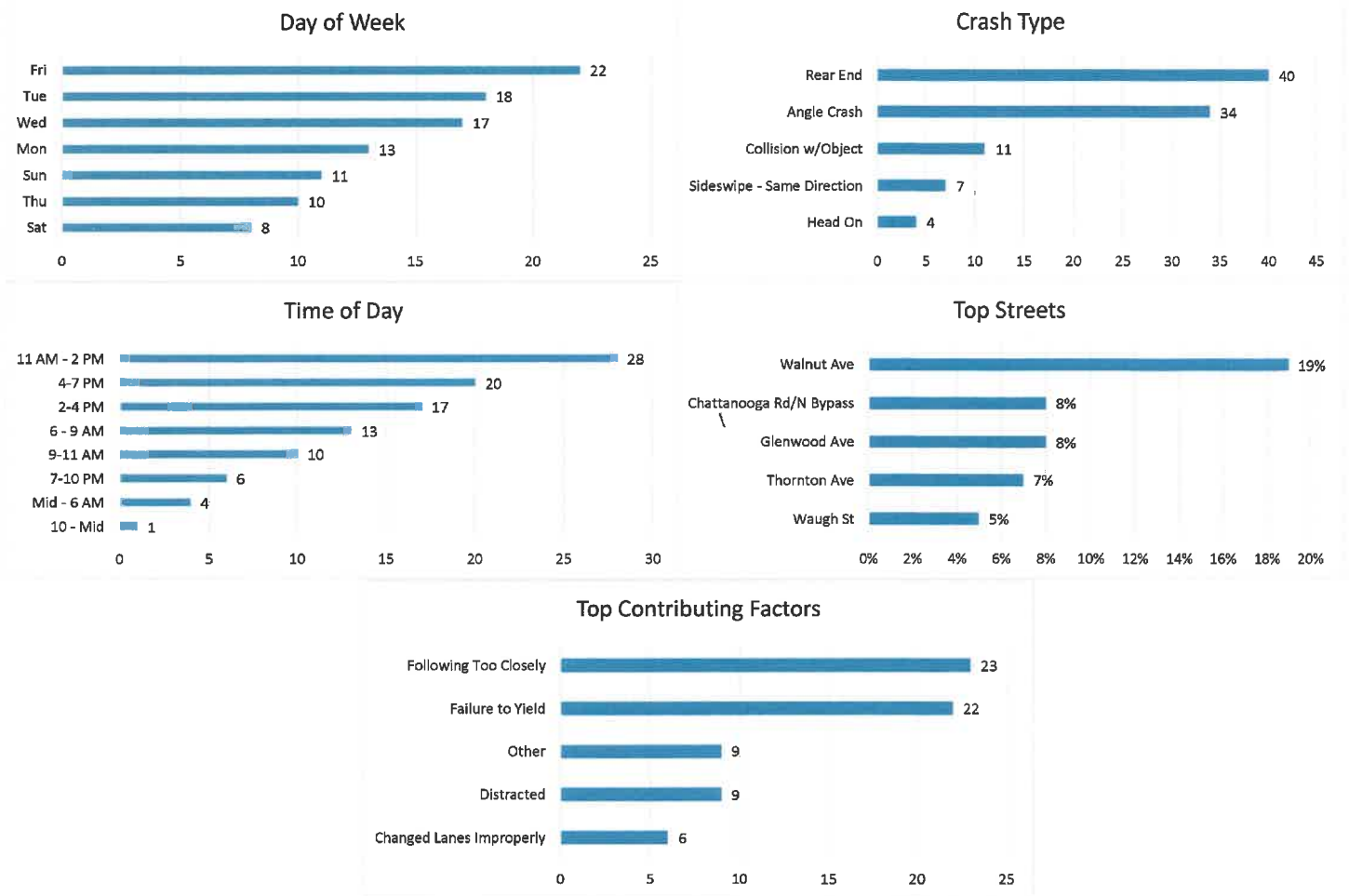


**DALTON POLICE DEPARTMENT
PUBLIC SAFETY COMMISSION MEETING
DECEMBER 15, 2020**

November 2020 Crash Statistics

In November 2020 there were 99 non-private property crashes reported. Injury crashes and total injuries decreased when compared to October 2020. Rear end and angle crashes were the most prevalent during November 2020. Failure to yield and following too closely were the leading contributing factors in injury crashes. Following too closely was the leading contributing factor in non-injury crashes. Walnut Ave had the highest number of crashes in November 2020. Chattanooga Rd/N Bypass had the highest number of injuries during November 2020.



99 Crashes Reported in November 2020

- There were 24 less crashes in November 2020 than in October 2020.
 - 18 crashes reported in which injuries occurred.
 - That is one injury crash for every 5.5 crashes reported.
 - Multiple injuries were reported in 5 crashes.

- Total Injuries Reported
 - 24 injuries were reported.
 - 1 serious injury was reported.
 - 1 fatality was reported.

DALTON POLICE DEPARTMENT
PUBLIC SAFETY COMMISSION MEETING
DECEMBER 15, 2020

Top 5 Streets

- Walnut Ave
 - 19 Total Crashes
 - 19.2 % of Total Crashes
 - 8.3 % of Injuries Reported (2 Injuries Reported on the Roadway)

- Chattanooga Rd/N Bypass
 - 8 Total Crashes
 - 8.1 % of Total Crashes
 - 25.0 % of Injuries Reported (6 Injuries Reported on this Roadway)

- Glenwood Ave
 - 8 Total Crashes
 - 8.1 % of Total Crashes
 - 12.5 % of Injuries Reported (3 Injuries Reported on this Roadway)

- Thornton Ave
 - 7 Total Crashes
 - 7.1 % of Total Crashes
 - 12.5 % of Injuries Reported (3 Injuries Reported on the Roadway)

- Waugh St
 - 5 Total Crashes
 - 5.1 % of Total Crashes
 - 8.3 % of Injuries Reported (2 Injuries Reported on the Roadway)

Crashes Involving DUI

- 4 Reported Crashes involving DUI

Crashes Involving Speed

- 4 Reported Crashes involving Speed (Includes Too Fast for Conditions)

Crashes Involving Distracted or Inattentive Driver

- 9 Crashes Reported with Distracted or Inattentive Driver

Crashes Involving Drivers Following One Another Too Closely

- 23 Crashes Reported involving Following Too Closely

**DALTON POLICE DEPARTMENT
PUBLIC SAFETY COMMISSION MEETING
DECEMBER 15, 2020**

Crashes by Type

- Rear End 40 / 40.40%
- Angle 34 / 34.34%
- Collision with an Object 11 / 11.11%
- Sideswipe – Same Direction 7 / 7.07%
- Head On 4 / 4.04%

Days of the Week

- 13 crashes occurred on Mondays
- 18 crashes occurred on Tuesdays
- 17 crashes occurred on Wednesdays
- 10 crashes occurred on Thursdays
- 22 crashes occurred on Fridays
- 8 crashes occurred on Saturdays
- 11 crashes occurred on Sundays

Time of Day

- 0000- 0559-4
- 0600-0859-13
- 0900-1059-10
- 1100-1359-28
- 1400-1559-17
- 1600-1859-20
- 1900-2159-6
- 2200-2359-1

Top Contributing Factors

- Following Too Closely: 23 (23.23 % of all crashes)
- Failure to Yield: 22 (22.22 % of all crashes)
- Other: 9 (9.09 % of all crashes)
- Distracted: 9 (9.09 % of all crashes)
- Changed Lanes Improperly: 6 (6.06 % of all crashes)

**DALTON POLICE DEPARTMENT
PUBLIC SAFETY COMMISSION MEETING
DECEMBER 15, 2020**

Based on the crash data from October 2020, Selective Enforcement Details were conducted in the following areas in November 2020:

- **Walnut Ave**
- **Glenwood Ave**

There were 11 total Enforcement Details conducted in November 2020, resulting in 125 total violations being identified.

Comparing the crash data compiled and the enforcement activities conducted for the month of November 2020, details will be conducted in December 2020 in the following areas:

- **Walnut Ave**
- **Chattanooga Rd**
- **Glenwood Ave**