

DATE: May 6, 2024
TO: ALL BIDDERS OF RECORD
PROJECT NAME: Baseball & Softball Turf In-fields for: Heritage Point Regional Park
PROJECT NUMBER: 23-023
FROM: KRH Architects
855 Abutment Road
Suite 4
Dalton, GA 30721

PRIME BIDDERS ACKNOWLEDGE THE RECEIPT OF THIS ADDENDUM BY INSERTING THE NUMBER AND DATE IN THE APPROPRIATE POSITION ON THE PROPOSAL FORM. FAILURE TO DO SO MAY SUBJECT THE BIDDER TO DISQUALIFICATION. THIS ADDENDUM IS A PART OF THE CONTRACT DOCUMENTS. IT MODIFIES THEM AS FOLLOWS:

Item No. 1

Civil Drawings

Replace these sheets in their entirety.
C4, C4.3, C4.4

Item No. 2

Civil Drawings

Add these sheets in their entirety.
C4.31, C4.41

END OF ADDENDUM 2
See attachments

Table with 2 columns: NO., DATE. Rows for ADD 1 and ADD 2.

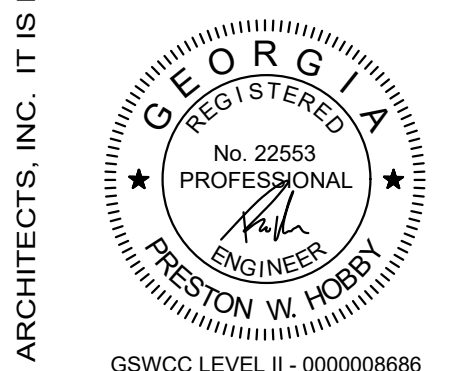
FACILITY CODE



855 ABUTMENT ROAD SUITE FOUR DALTON, GA 30721 TEL. 706.529.5895

Vertical sidebar containing PWR ENGINEERING logo, address (2900 DELA ROAD, STE 700 #218), phone (770-433-8190), and a scale bar (1" = 10').

BASEBALL & SOFTBALL TURF INFIELDS FOR: HERITAGE POINT REGIONAL PARK 1275 CROSS PLAINS TRAIL DALTON, GA 30721 CITY OF DALTON PARKS AND RECREATION



SHEET INDEX

EROSION CONTROL CHECKLIST

SHEET INDEX

THIS DRAWING IS THE PROPERTY OF KRH ARCHITECTS, INC. IT IS NOT TO BE REPRODUCED IN WHOLE OR IN PART. IT IS NOT TO BE USED ON ANY OTHER PROJECT. IT SHALL BE RETURNED UPON REQUEST. COPYRIGHT AS DATED KRH ARCHITECTS INC. NOT VALID UNLESS SIGNED AND SEALED

EROSION, SEDIMENTATION & POLLUTION CONTROL PLAN CHECKLIST STAND ALONE CONSTRUCTION PROJECTS

Main checklist table with columns for Plan Page #, Included Y/N, and 17 numbered items. Includes project name: Heritage Park Athletic Field Renovations.

Continuation of checklist table with items 18 through 36.

Continuation of checklist table with items 37 through 52. Includes a table for contour intervals.

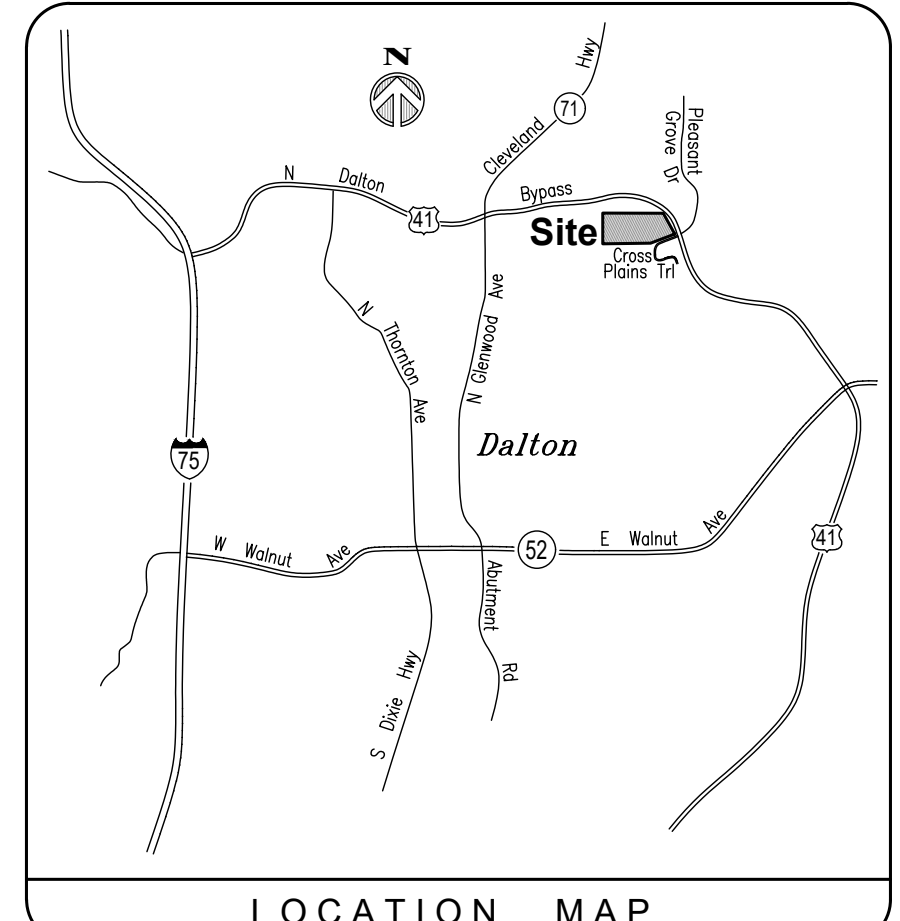
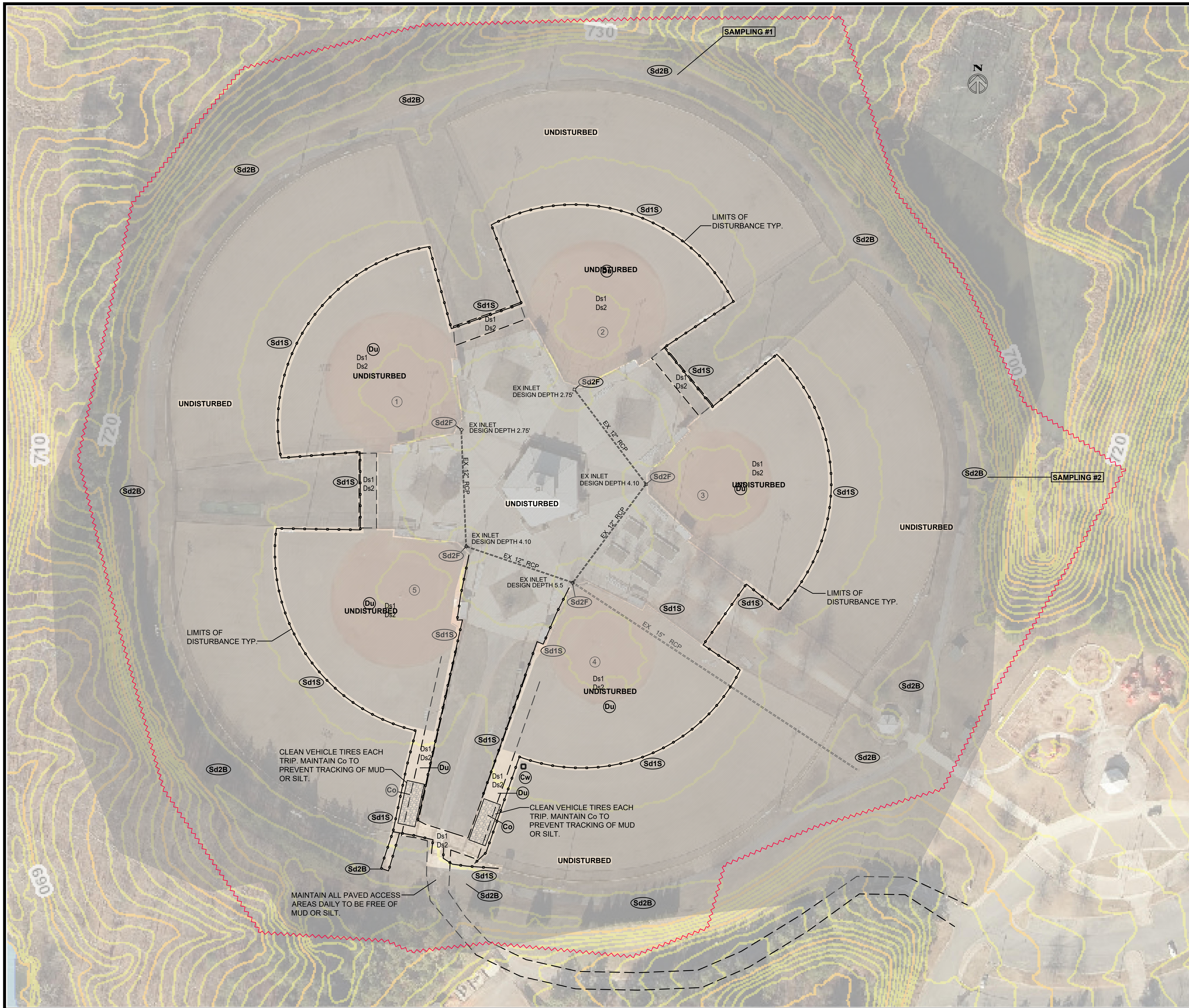
Effective January 1, 2024

APPENDIX 1 THE ES&PC PLAN MUST INCLUDE AT LEAST FOUR (4) OF THE FOLLOWING BMPs FOR THOSE AREAS OF THE SITE WHICH DISCHARGE TO AN IMPAIRED STREAM SEGMENT AND FOR SITES WHICH EPD HAS APPROVED IN WRITING A REQUEST TO DISTURB 50 ACRES OR MORE AT ANY ONE TIME.

Appendix 1 checklist table with 17 items (a through q) detailing specific BMP requirements.

Continuation of Appendix 1 checklist table with items s through v.

Effective January 1, 2024



--- EXISTING
--- PROPOSED

+ 70.93 EXISTING SPOT ELEVATION
• 54.3 PROPOSED SPOT ELEVATION

AC-ACRES	PB-PLAT BOOK
BC-BACK OF CURB	PG-PAGE
BL-BUILDING SETBACK	PL-PROPERTY LINE
CB-CATCH BASIN	POB-POINT OF BEGINNING
CC-CURB & GUTTER	PP-POWER POLE
CH-CHORD	PS-PARKING SPACE
CL-CENTERLINE	PTC-PRIOR TO CONSTRUCTION
CMP-CORR. METAL PIPE	R-RADIUS
DB-DEED BOOK	RCP-REINFORCED CONC. PIPE
DE-DRAINAGE EASEMENT	RD-ROOF DRAIN
DI-DROP INLET	RR-RAILROAD
EP-EDGE PAVEMENT	R/W-RIGHT OF WAY
EX-EXISTING	SD-STORM DRAIN
FH-FIRE HYDRANT	SF-SQUARE FEET
G-GAS LINE	SS-SANITARY SEWER
HW-HEADWALL	SSE-SAN. SEWER EASEMENT
HD-HEAVY DUTY	SSMH-SAN. SEWER MANHOLE
IPP-IRON PIN PLACED	SW-CONCRETE SIDEWALK
IPF-IRON PIN FOUND	TB-THRUST BLOCK
JB-JUNCTION BOX	TBR-TO BE REMOVED
L-ARC LENGTH	TC-TOP OF CURB
LOC-LIMIT OF CLEARING	TELE-TELEPHONE
LP-LIGHT/LAMP POST	TR-TO REMAIN
MH-MANHOLE	TW-TOP OF WALL
N/F-NOW OR FORMERLY	W-WATER
OHP-OVERHEAD POWER	WV-WATER VALVE

LEGEND

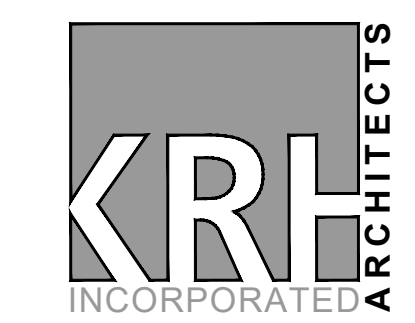
PROJECT NUMBER
23-017

DATE
11/20/23

REVISIONS

NO.	DATE
ADD 1	05/03/24
ADD 2	05/06/24

FACILITY CODE



855 ABUTMENT ROAD
SUITE FOUR
DALTON, GA 30721
TEL. 706.529.5895

PWR ENGINEERING CIVIL ENGINEERING
SITE DEVELOPMENT

2900 DELA ROAD STE 700 #218 • MARIETTA, GA 30067 • PH: 770-433-8190

1275 CROSS PLAINS TRAIL DALTON, GA 30721

ISSUE DATE: 04-10-24
JOB No. 23180 SCALE: 1" = 50'

BASEBALL & SOFTBALL TURF INFIELDS FOR:
HERITAGE POINT REGIONAL PARK
1275 CROSS PLAINS TRAIL DALTON, GA 30721
CITY OF DALTON PARKS AND RECREATION

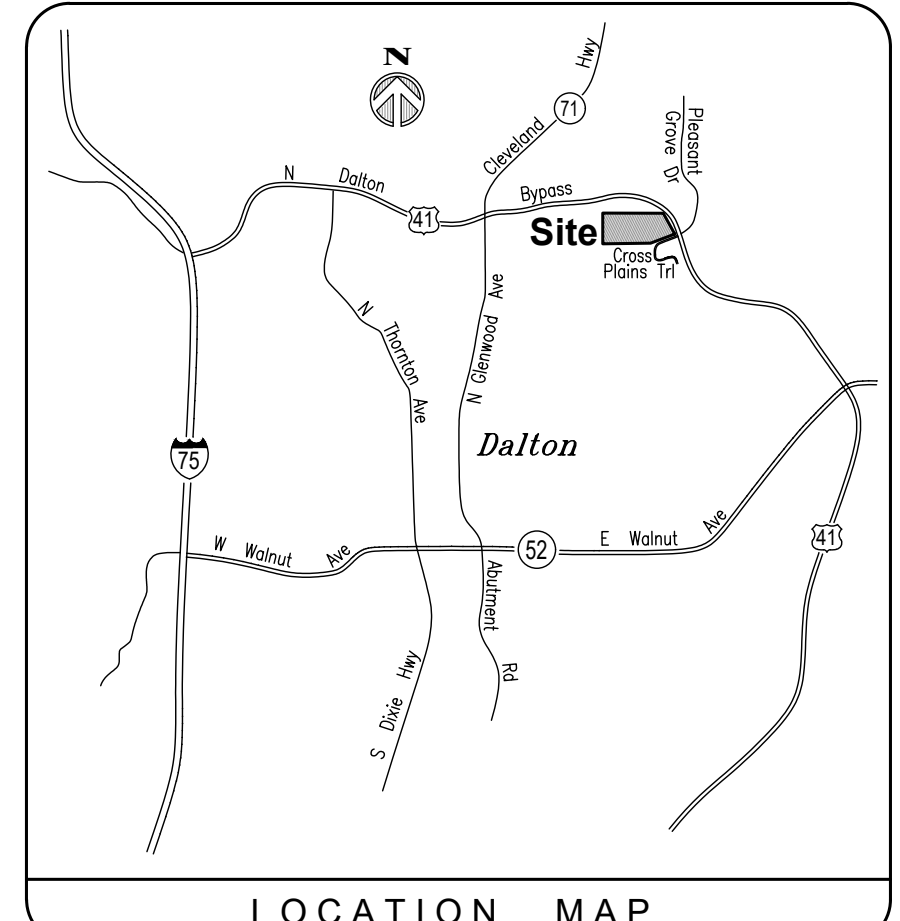
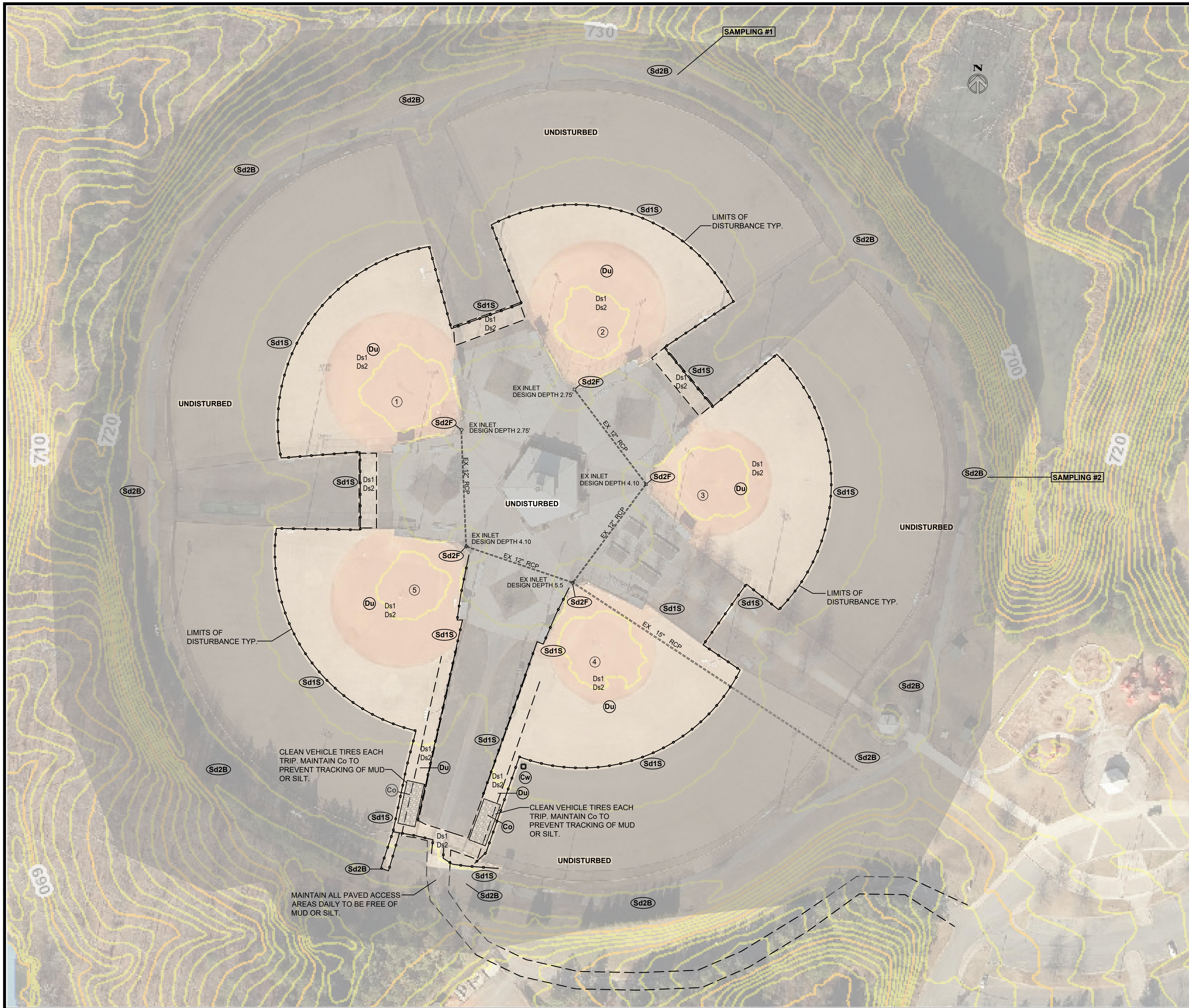


SHEET INDEX

EROSION CONTROL INITIAL PHASE WEST
SHEET INDEX

C4.3

THIS DRAWING IS THE PROPERTY OF KRH ARCHITECTS, INC. IT IS NOT TO BE REPRODUCED IN WHOLE OR IN PART. IT IS NOT TO BE USED ON ANY OTHER PROJECT. IT SHALL BE RETURNED UPON REQUEST. COPYRIGHT AS DATED KRH ARCHITECTS INC. NOT VALID UNLESS SIGNED AND SEALED



--- EXISTING
--- PROPOSED

+ 70.93 EXISTING SPOT ELEVATION
• 54.3 PROPOSED SPOT ELEVATION

AC-ACRES	PB-PLAT BOOK
BC-BACK OF CURB	PG-PAGE
BL-BUILDING SETBACK	PL-PROPERTY LINE
CB-CATCH BASIN	POB-POINT OF BEGINNING
CC-CURB & GUTTER	PP-POWER POLE
CH-CHORD	PS-PARKING SPACE
CL-CENTERLINE	PTC-PRIOR TO CONSTRUCTION
CMP-CORR. METAL PIPE	R-RADIUS
DB-DEED BOOK	RCP-REINFORCED CONC. PIPE
DE-DRAINAGE EASEMENT	RD-ROOF DRAIN
DI-DROP INLET	RR-RAILROAD
EP-EDGE PAVEMENT	R/W-RIGHT OF WAY
EX-EXISTING	SD-STORM DRAIN
FH-FIRE HYDRANT	SF-SQUARE FEET
G-GAS LINE	SS-SANITARY SEWER
HW-HEADWALL	SSE-SAN. SEWER EASEMENT
HD-HEAVY DUTY	SSMH-SAN. SEWER MANHOLE
IPP-IRON PIN PLACED	SW-CONCRETE SIDEWALK
IPP-IRON PIN FOUND	TB-THRUST BLOCK
JB-JUNCTION BOX	TBR-TO BE REMOVED
L-ARC LENGTH	TC-TOP OF CURB
LOC-LIMIT OF CLEARING	TELE-TELEPHONE
LP-LIGHT/LAMP POST	TR-TO REMAIN
MH-MANHOLE	TW-TOP OF WALL
N/F-NOW OR FORMERLY	W-WATER
OHP-OVERHEAD POWER	WV-WATER VALVE

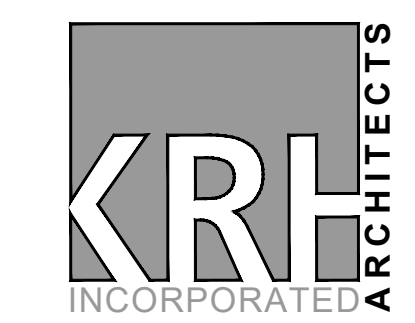
LEGEND

PROJECT NUMBER
23-017

DATE
11/20/23

REVISIONS
NO. DATE

FACILITY CODE



855 ABUTMENT ROAD
SUITE FOUR
DALTON, GA 30721
TEL. 706.529.5895

PWR ENGINEERING CIVIL ENGINEERING
SITE DEVELOPMENT

2900 DELA ROAD STE 700 #218 • MARIETTA, GA 30067 • PH: 770-433-8190

1275 CROSS PLAINS TRAIL DALTON, GA 30721

ISSUE DATE: 04-10-24
JOB No. 23180 SCALE: 1" = 50'

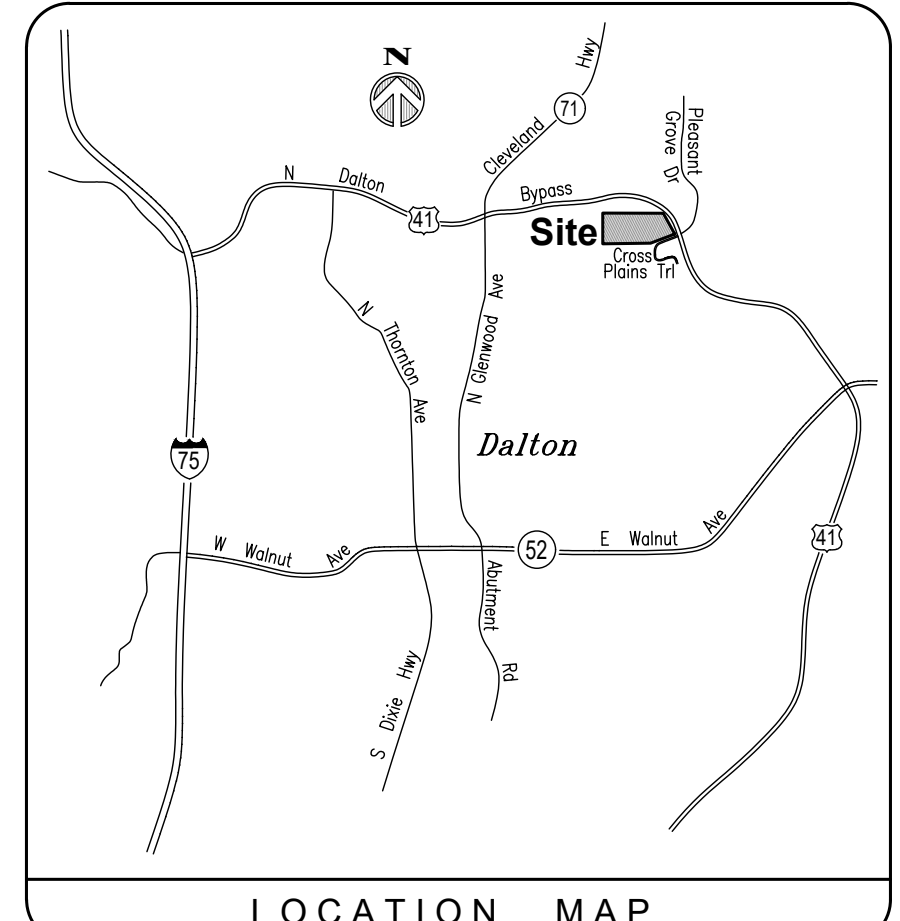
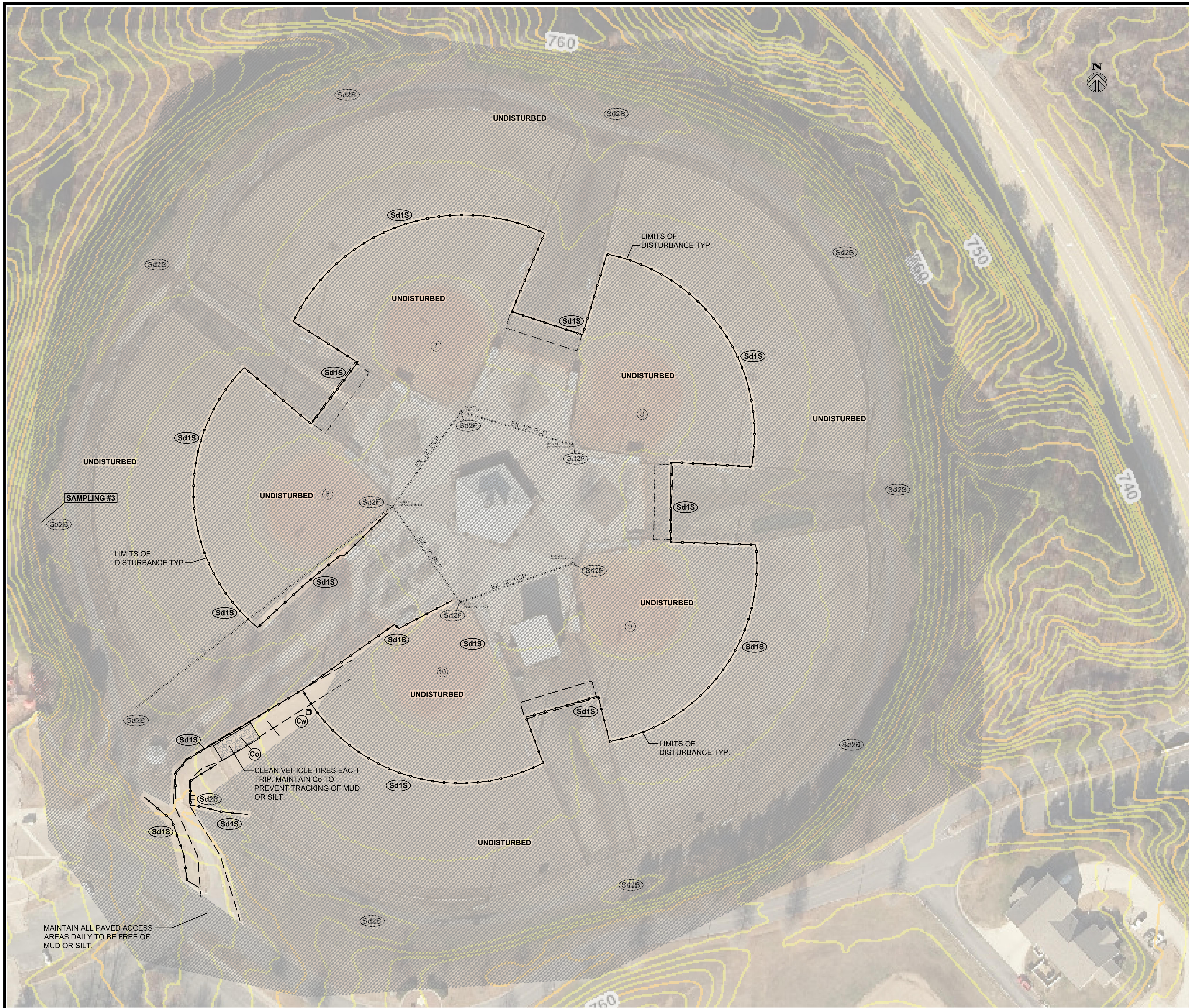
BASEBALL & SOFTBALL TURF INFIELDS FOR:
HERITAGE POINT REGIONAL PARK
1275 CROSS PLAINS TRAIL DALTON, GA 30721
CITY OF DALTON PARKS AND RECREATION



SHEET INDEX
EROSION CONTROL
INTERMEDIATE
PHASE WEST
SHEET INDEX

C4.31

THIS DRAWING IS THE PROPERTY OF KRH ARCHITECTS, INC. IT IS NOT TO BE REPRODUCED IN WHOLE OR IN PART. IT IS NOT TO BE USED ON ANY OTHER PROJECT. IT SHALL BE RETURNED UPON REQUEST. COPYRIGHT AS DATED KRH ARCHITECTS INC. NOT VALID UNLESS SIGNED AND SEALED



--- EXISTING
--- PROPOSED

+ 70.93 EXISTING SPOT ELEVATION
• 54.3 PROPOSED SPOT ELEVATION

AC-ACRES	PB-PLAT BOOK
BC-BACK OF CURB	PG-PAGE
BL-BUILDING SETBACK	PL-PROPERTY LINE
CB-CATCH BASIN	POB-POINT OF BEGINNING
CC-CURB & GUTTER	PP-POWER POLE
CH-CHORD	PS-PARKING SPACE
CL-CENTERLINE	PTC-PRIOR TO CONSTRUCTION
CMP-CORR. METAL PIPE	R-RADIUS
DB-DEED BOOK	RCP-REINFORCED CONC. PIPE
DE-DRAINAGE EASEMENT	RD-ROOF DRAIN
DI-DROP INLET	RR-RAILROAD
EP-EDGE PAVEMENT	R/W-RIGHT OF WAY
EX-EXISTING	SD-STORM DRAIN
FH-FIRE HYDRANT	SF-SQUARE FEET
G-GAS LINE	SS-SANITARY SEWER
HW-HEADWALL	SSE-SAN. SEWER EASEMENT
HD-HEAVY DUTY	SSMH-SAN. SEWER MANHOLE
IPP-IRON PIN PLACED	SW-CONCRETE SIDEWALK
IPF-IRON PIN FOUND	TB-THRUST BLOCK
JB-JUNCTION BOX	TBR-TO BE REMOVED
L-ARC LENGTH	TC-TOP OF CURB
LOC-LIMIT OF CLEARING	TELE-TELEPHONE
LP-LIGHT/LAMP POST	TR-TO REMAIN
MH-MANHOLE	TW-TOP OF WALL
N/F-NOW OR FORMERLY	W-WATER
OHP-OVERHEAD POWER	WV-WATER VALVE

LEGEND

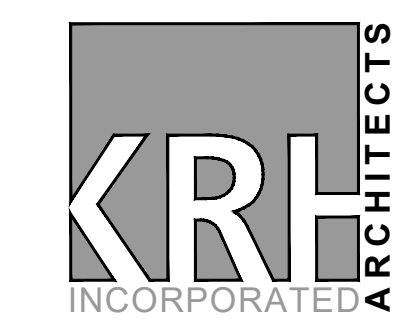
PROJECT NUMBER
23-017

DATE
11/20/23

REVISIONS

NO.	DATE
ADD 1	05/03/24
ADD 2	05/06/24

FACILITY CODE



855 ABUTMENT ROAD
SUITE FOUR
DALTON, GA 30721
TEL. 706.529.5895

PWR ENGINEERING CIVIL ENGINEERING
SITE DEVELOPMENT

2900 DELA ROAD STE 700 #218 • MARIETTA, GA 30067 • PH: 770-433-8190

1275 CROSS PLAINS TRAIL DALTON, GA 30721

ISSUE DATE: 04-10-24
JOB No. 23180 SCALE: 1" = 50'

BASEBALL & SOFTBALL TURF INFIELDS FOR:
HERITAGE POINT REGIONAL PARK
1275 CROSS PLAINS TRAIL DALTON, GA 30721
CITY OF DALTON PARKS AND RECREATION



GSWCC LEVEL II - 0000008688

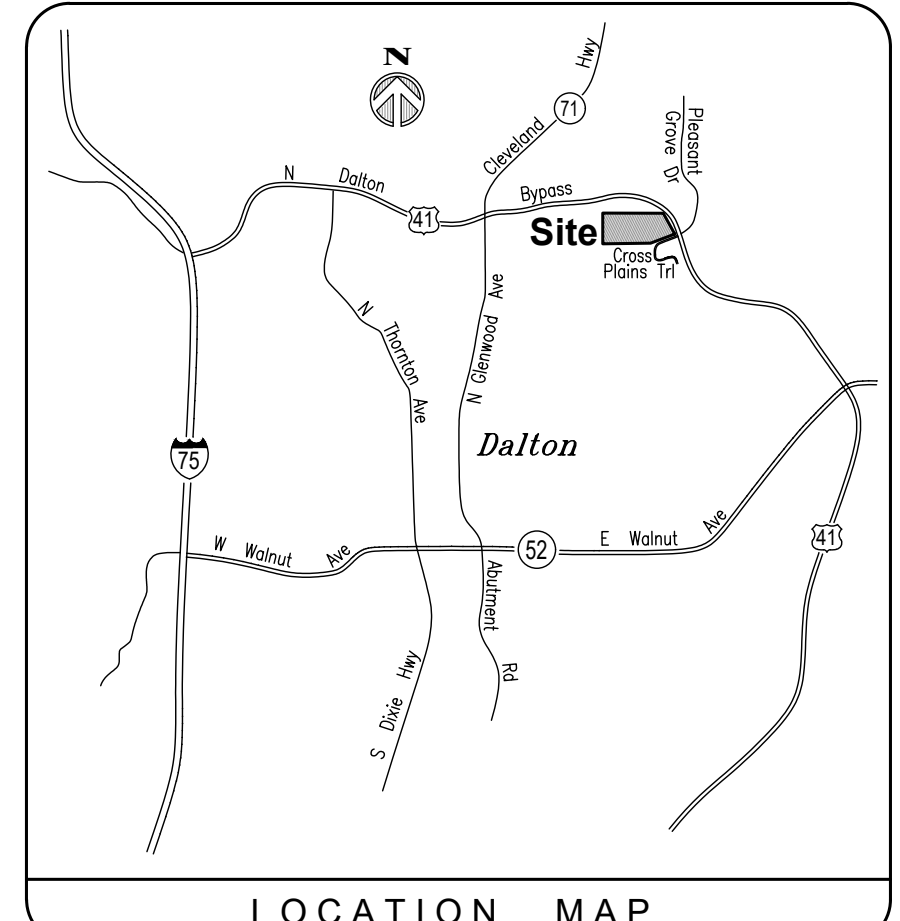
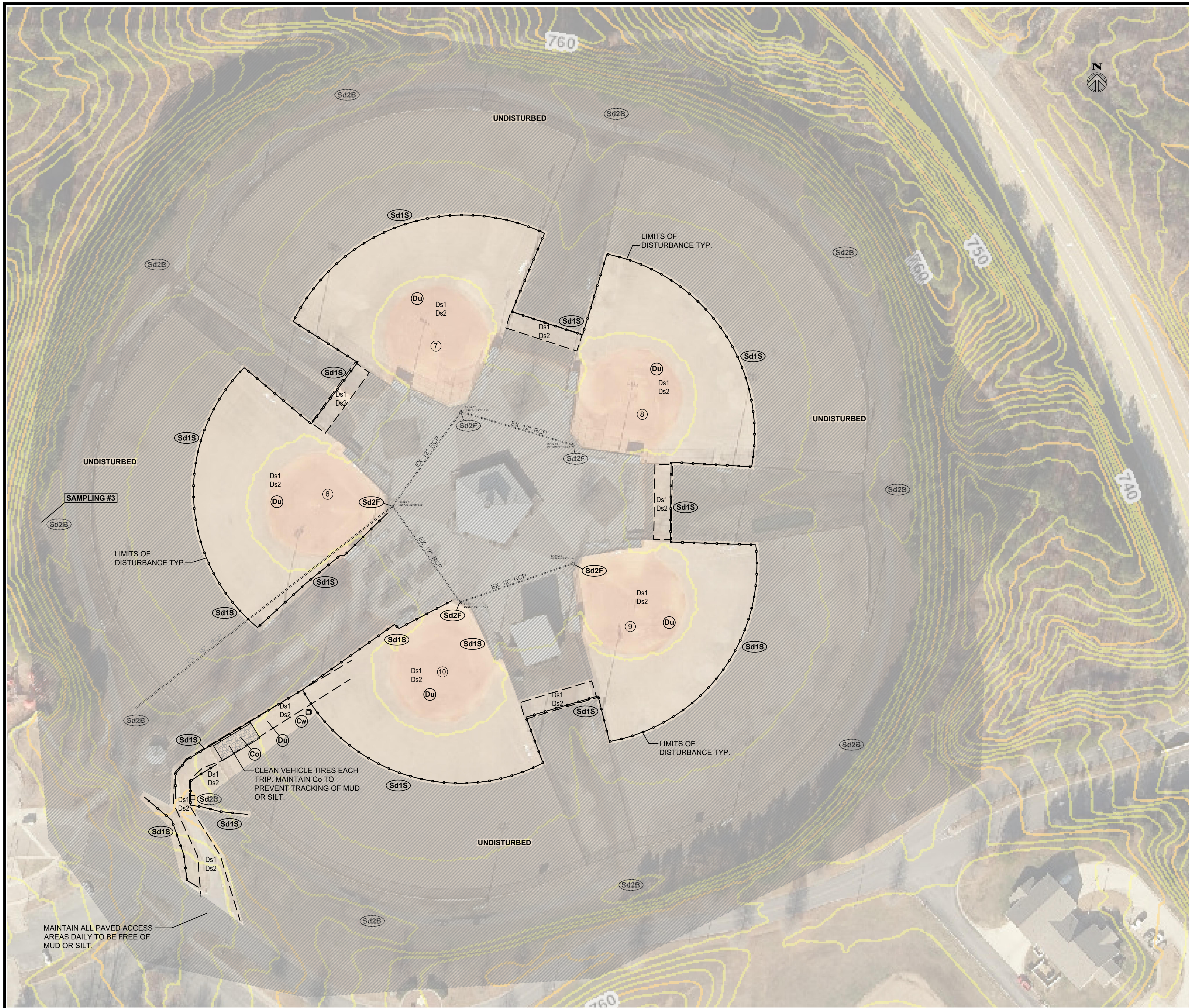
SHEET INDEX

EROSION CONTROL INITIAL PHASE EAST

SHEET INDEX

C4.4

THIS DRAWING IS THE PROPERTY OF KRH ARCHITECTS, INC. IT IS NOT TO BE REPRODUCED IN WHOLE OR IN PART. IT IS NOT TO BE USED ON ANY OTHER PROJECT. IT SHALL BE RETURNED UPON REQUEST. COPYRIGHT AS DATED KRH ARCHITECTS INC. NOT VALID UNLESS SIGNED AND SEALED



--- EXISTING
--- PROPOSED

+ 70.93 EXISTING SPOT ELEVATION
• 54.3 PROPOSED SPOT ELEVATION

AC-ACRES	PB-PLAT BOOK
BC-BACK OF CURB	PG-PAGE
BL-BUILDING SETBACK	PL-PROPERTY LINE
CB-CATCH BASIN	POB-POINT OF BEGINNING
CC-CURB & GUTTER	PP-POWER POLE
CH-CHORD	PS-PARKING SPACE
CL-CENTERLINE	PTC-PRIOR TO CONSTRUCTION
CMP-CORR. METAL PIPE	R-RADIUS
DB-DEED BOOK	RCP-REINFORCED CONC. PIPE
DE-DRAINAGE EASEMENT	RD-ROOF DRAIN
DI-DROP INLET	RR-RAILROAD
EP-EDGE PAVEMENT	R/W-RIGHT OF WAY
EX-EXISTING	SD-STORM DRAIN
G-GAS LINE	SF-SQUARE FEET
HW-HEADWALL	SS-SANITARY SEWER
HD-HEAVY DUTY	SSE-SAN. SEWER EASEMENT
IPP-IRON PIN PLACED	SSMH-SAN. SEWER MANHOLE
IPF-IRON PIN FOUND	SW-CONCRETE SIDEWALK
JB-JUNCTION BOX	TB-THRUST BLOCK
L-ARC LENGTH	TBR-TO BE REMOVED
LOC-LIMIT OF CLEARING	TC-TOP OF CURB
LP-LIGHT/LAMP POST	TELE-TELEPHONE
MH-MANHOLE	TR-TO REMAIN
N/F-NOW OR FORMERLY	TW-TOP OF WALL
OHP-OVERHEAD POWER	W-WATER
	WV-WATER VALVE

LEGEND

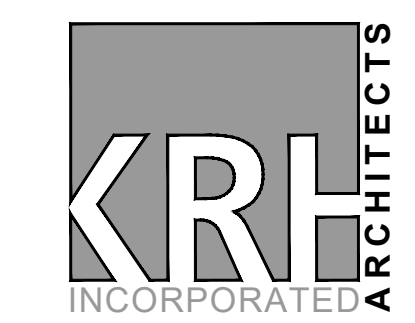
PROJECT NUMBER
23-017

DATE
11/20/23

REVISIONS

NO.	DATE
ADD 1	05/03/24
ADD 2	05/06/24

FACILITY CODE



855 ABUTMENT ROAD
SUITE FOUR
DALTON, GA 30721
TEL. 706.529.5895

PWR ENGINEERING CIVIL ENGINEERING
SITE DEVELOPMENT

2900 DELA ROAD STE 700 #218 • MARIETTA, GA 30067 • PH: 770-433-8190

1275 CROSS PLAINS TRAIL DALTON, GA 30721

ISSUE DATE: 04-10-24
JOB NO. 23180 SCALE: 1" = 50'

BASEBALL & SOFTBALL TURF INFIELDS FOR:
HERITAGE POINT REGIONAL PARK
1275 CROSS PLAINS TRAIL DALTON, GA 30721
CITY OF DALTON PARKS AND RECREATION



GSWCC LEVEL II - 000008688

SHEET INDEX

EROSION CONTROL INTERMEDIATE PHASE EAST

SHEET INDEX

C4.41

THIS DRAWING IS THE PROPERTY OF KRH ARCHITECTS, INC. IT IS NOT TO BE REPRODUCED IN WHOLE OR IN PART. IT IS NOT TO BE USED ON ANY OTHER PROJECT. IT SHALL BE RETURNED UPON REQUEST. COPYRIGHT AS DATED KRH ARCHITECTS INC. NOT VALID UNLESS SIGNED AND SEALED